

PERFORMANCE

Processor

Intel® Core™ i5-1135G7 (4C / 8T, 2.4 / 4.2GHz, 8MB)

Graphics

NVIDIA® Quadro® T500 4GB GDDR6

Chipset

Intel SoC Platform

Memory

8GB Soldered DDR4-3200 non-ECC + 8GB SO-DIMM DDR4-3200 non-ECC

Memory Slots

One memory soldered to systemboard, one DDR4 SO-DIMM slot, dual-channel capable

Max Memory

Up to 40GB (8GB soldered + 32GB SO-DIMM) DDR4-3200

Storage

512GB SSD M.2 2280 PCIe x4 NVMe Opal2

Storage Support

One drive, up to 2TB M.2 2280 SSD

Card Reader

MicroSD Card Reader

Audio Chip

High Definition (HD) Audio, Realtek® ALC3287 codec

Speakers

Stereo speakers, 2W x2, Dolby® Audio™

Camera

IR & 720p with Privacy Shutter

Microphone

2x, Array

Battery

Integrated 57Wh

Max Battery Life

MobileMark® 2018: 9.3 hr
JEITA 2.0: 15.8 hr

Power Adapter

65W USB-C Slim (3-pin)

DESIGN

Display

15.6" FHD (1920x1080) IPS 300nits Anti-glare, 45% NTSC

Touchscreen

None

Color Calibrator

None

Keyboard

Backlit, English

Case Color

Storm Grey

Case Material

Aluminium (Top), PC + ABS / Talc15 + Magnesium Alloy (Keyboard Cover), PA / 50% GF (Bottom)

Dimensions (WxDxH)

365.8 x 248 x 19.1 mm (14.40 x 9.76 x 0.75 inches)

Weight

1.783 kg (3.93 lbs)

SOFTWARE

Operating System

None

Bundled Software

None

CONNECTIVITY

Ethernet

100/1000M

WLAN + Bluetooth®

Intel AX201 11ax, 2x2 + BT5.2

WWAN

None

SIM Card

None

NFC

None

Standard Ports

- 1x Side docking connector
- 1x Ethernet (RJ-45)
- 1x USB 3.2 Gen 1
- 1x USB 3.2 Gen 1 (Always On)
- 1x Headphone / microphone combo jack (3.5mm)
- 1x microSD card reader
- 1x HDMI® 2.0
- 2x Thunderbolt™ 4 / USB4™ 40Gbps / USB-C 3.2 Gen 2 (support data transfer, Power Delivery 3.0 and DisplayPort™ 1.4)

Optional Ports (configured)

1x Smart card reader

Monitor Cable

None

SECURITY & PRIVACY

Smart Card Reader

Smart Card Reader

Security Chip

Discrete TPM 2.0

Fingerprint Reader

Touch Style, Match-on-Chip

Physical Locks

Kensington® Security Slot

Other Security

- IR camera for Windows® Hello
- Camera privacy shutter

MANAGEABILITY

System Management

None

SERVICE

Base Warranty

1-year, Depot

Included Upgrade

3Y Premier Support Upgrade from 1Y Courier/Carry-in (5WSOV07078)

ACCESSORIES

Bundled Accessories

None

CERTIFICATIONS

Green Certifications

- ENERGY STAR® 8.0
- EPEAT™ Gold
- TCO Certified Notebooks 8
- RoHS compliant

Mil-Spec Test

MIL-STD-810H military test passed

ISV Certifications

Please visit www.thinkworkstations.com/isv-certifications/

MODEL

TopSeller	: Yes	Announce Date	: 2021-07-27
EAN / UPC / JAN	: 196118339979	End of Support	: 2027-09-23

Premier Support - A direct 24x7x365 line to our most elite technicians.



Advanced technical support, 24x7x365, in more than 100 markets



Technical Account Managers for proactive relationship and escalation management



Comprehensive hardware & OEM software support



Priority on service delivery and repair parts



Single point of contact for simplified end-to-end case management



Lenovo Service Connect Portal for customized reporting and product support

Accidental Damage Protection - Protection of your PC from the unexpected.

Experience shows that a significant portion of devices may be damaged (and not covered under warranty) in the first three years. Lenovo's Accidental Damage Protection service covers accidents beyond the system warranty such as drops, spills, bumps and even electrical surges. Make sure your new device has maximum protection, avoid unplanned costs and get peace of mind.

Base Warranty - Included with the systems you purchase, default 1- or 3-year coverage window.

Warranty Extensions & Upgrades - Service and protection that's right for your circumstances.

- Pick Up & Return Courier
- Onsite Support
- Technician Installed Customer
- Replaceable Unit Service
- International Warranty Upgrade

Lenovo may not offer the products, services or features discussed in this document in all regions. Lenovo may withdraw an offering at any time. Information is subject to change without notice. Consult your local representative for information on offerings available in your area. Lenovo reserves the right to change specifications or other product information without notice. Lenovo is not responsible for photographic or typographical errors. Lenovo provides this publication "as is" without warranty of any kind, either express or implied, including the implied warranties of merchantability or fitness for a particular purpose.

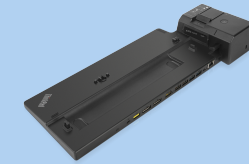
Recommended Accessories



ThinkPad Thunderbolt 3 Dock Gen 2 - US

40AN0135US

Lenovo understands that modern business depends on a wide variety of notebooks and devices from different brands working seamlessly together to meet business needs. To deliver this experience, ThinkPad Thunderbolt 3 D...



ThinkPad Ultra Docking Station (American Standard Plug)

40AJ0135US

The ThinkPad Ultra Docking Station provides the best docking experience for large enterprise ThinkPad customers. The innovative side connector, designed exclusively for ThinkPad notebooks, provides a driver-free way t...

For a full list of accessories and services, please visit:
<https://smartfind.Lenovo.com>

Lenovo

PSREF
Product Specifications
Reference