

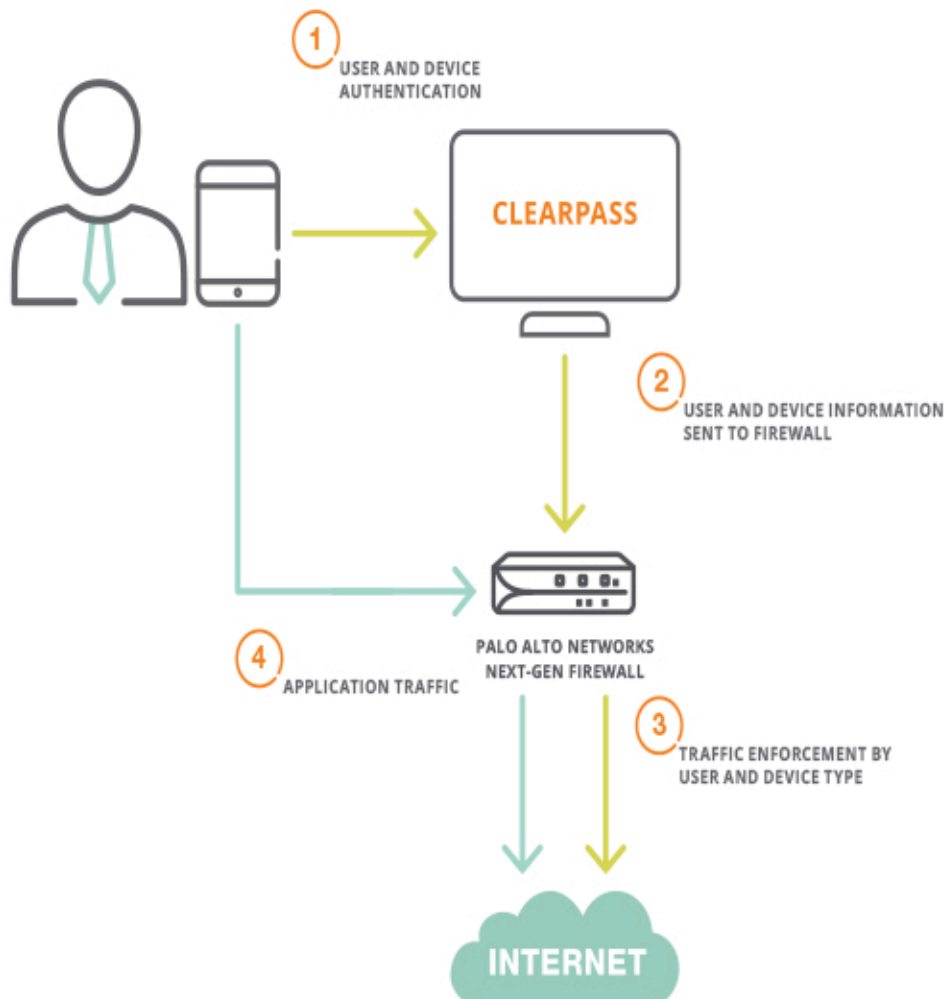
NEXT-GENERATION FIREWALLS

Next-generation firewalls feature traffic classification that natively inspects all apps, threats and content. ClearPass integration extends the policy enforcement capabilities of these firewalls beyond simple IP address and directory-based user identity information.

Now you can enforce policies based on user and device, guest network, and non-directory identity information. This is crucial to handle the volume and diversity of devices that connect to enterprise networks, and ensures that enforcement rules are applied correctly.

ClearPass integration with firewalls lets you give an iPad user external web browsing privileges to access webmail and social sites, while restricting that same user on a company-issued laptop to external web browsing with no access to webmail and social sites.

AN EXAMPLE OF ENHANCED POLICY ENFORCEMENT WITH PALO ALTO NETWORKS FIREWALLS



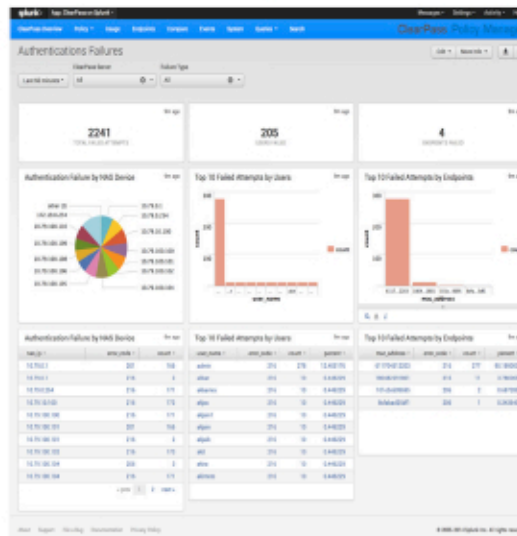
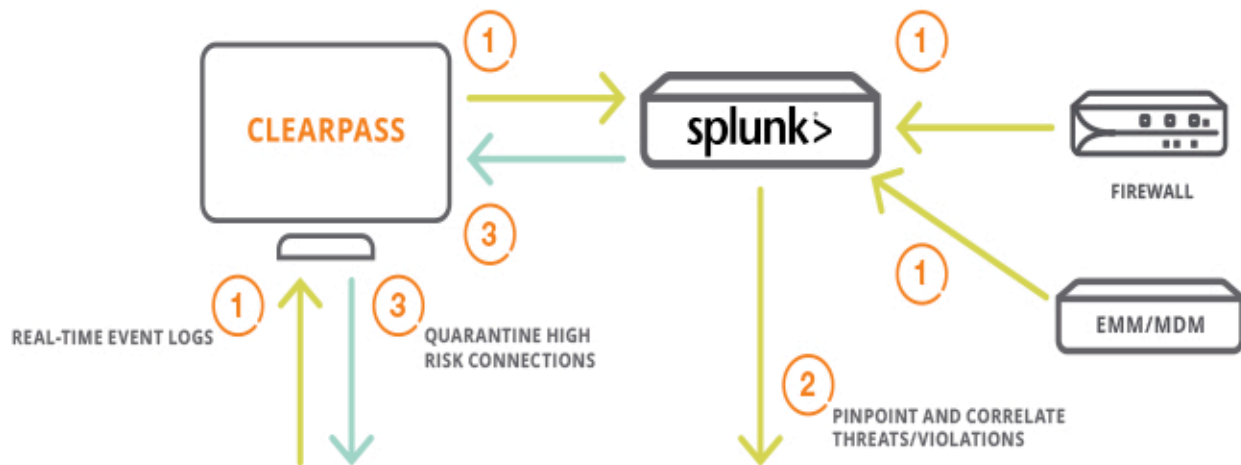
SECURITY INCIDENT EVENT MANAGEMENT (SIEM)

SIEM systems let you aggregate all security events for data correlation and possible coordinated enforcement actions with other systems. Sharing NAC/AAA data with these solutions is essential to any access layer security strategy.

ClearPass integrates with SIEM systems like QRadar, ArcSight and Splunk to share session logs, audit events, event records and other syslog data. Contextual data shared by ClearPass enables SIEM systems to rapidly pinpoint security threats and policy violations.

Additionally, ClearPass integration with SIEMs makes it easy to track authentication requests, failures and alerts, policy enforcement trends – such as the Top 10 most frequent enforcement profiles applied – endpoint profiles, session details, and other useful information.

AN EXAMPLE OF SECURITY ANALYTICS AND INCIDENT MANAGEMENT



BUILDING AN ADAPTIVE DEFENSE

Integration between best-of-breed IT systems, including the sharing of contextual information, is the key to a coordinated defense. It's the type of security that is needed in today's mobile enterprise, where more and more Wi-Fi-enabled mobile devices are connecting inside and outside of your enterprise security perimeter.

Instead of taking a siloed approach where your existing systems are blind to each other's actions, ClearPass Exchange provides bidirectional visibility through the power of integration.

With ClearPass, it's easy to integrate a variety of systems – from access layer, EMM and network security products to hospitality, payment and messaging systems – and trigger http-based workflow actions with the open platform of your choosing.

IT benefits from greatly enhanced workflow automation. End users benefit from self-service and a vastly improved user experience. And above all, your enterprise benefits from coordinated, adaptive security that's purpose-built for today's dynamic and highly mobile environment.