

# ATEN Featured Products

## KVM over IP Switches

- Cat 5 KVM over IP Switch with Virtual Media (1920 x 1200)
  - 1 Remote Bus: KN1108VA / KN1108VA / KN1108V / KN1116VA / KN1116V / KN1132V
  - 2 Remote Bus: KN2116VA / KN2124VA / KN2132VA / KN2140VA
  - 4 Remote Bus: KN4116VA / KN4124VA / KN4132VA / KN4140VA / KN4164V
  - 8 Remote Bus: KN8132V / KN8164V



- Cat 5 KVM over IP Switch with Daisy-Chain Port  
KH1508AI / KH1516AI



## Cat 5 KVM Switches

- Cat 5 KVM Switch with Daisy-Chain Port  
KH1508A / KH1516A / KH1532A



## LCD KVM Switches / LCD Console

- LCD KVM Console: CL1000/ CL3800
- LCD KVM Switch: KL1508A / KL1516A
- LCD KVM over IP Switch: KL1108V/KL1116V





## Government Law Enforcement

With the increasing dependency on technology to solve major crimes, information requirements for analysis and strategic decision-making is rapidly transitioning from paper and physical files to a completely digital format. Given the growing need of law enforcement officers to share information across departments and between agencies, log emergency calls and coordinate responses, and other daily police business that creates a huge amount of incoming data traffic, more police districts are setting up larger, more complex information systems deployed by their own in-house IT professionals.

### Police Headquarters Centralized Data Center

To house new advanced application and database servers, a police department's IT division planned to build a new centralized data center to handle the data management requirements of information sharing and day-to-day police business. They wanted an efficient solution that enabled multiple operators to manage up to 300 servers. Since the operation included IT professionals working within the data center and IT administrators working remotely from buildings outside the data center, the solution required that multiple administrators in different locations had easy access to manage the many servers, locally and remotely, at the same time.

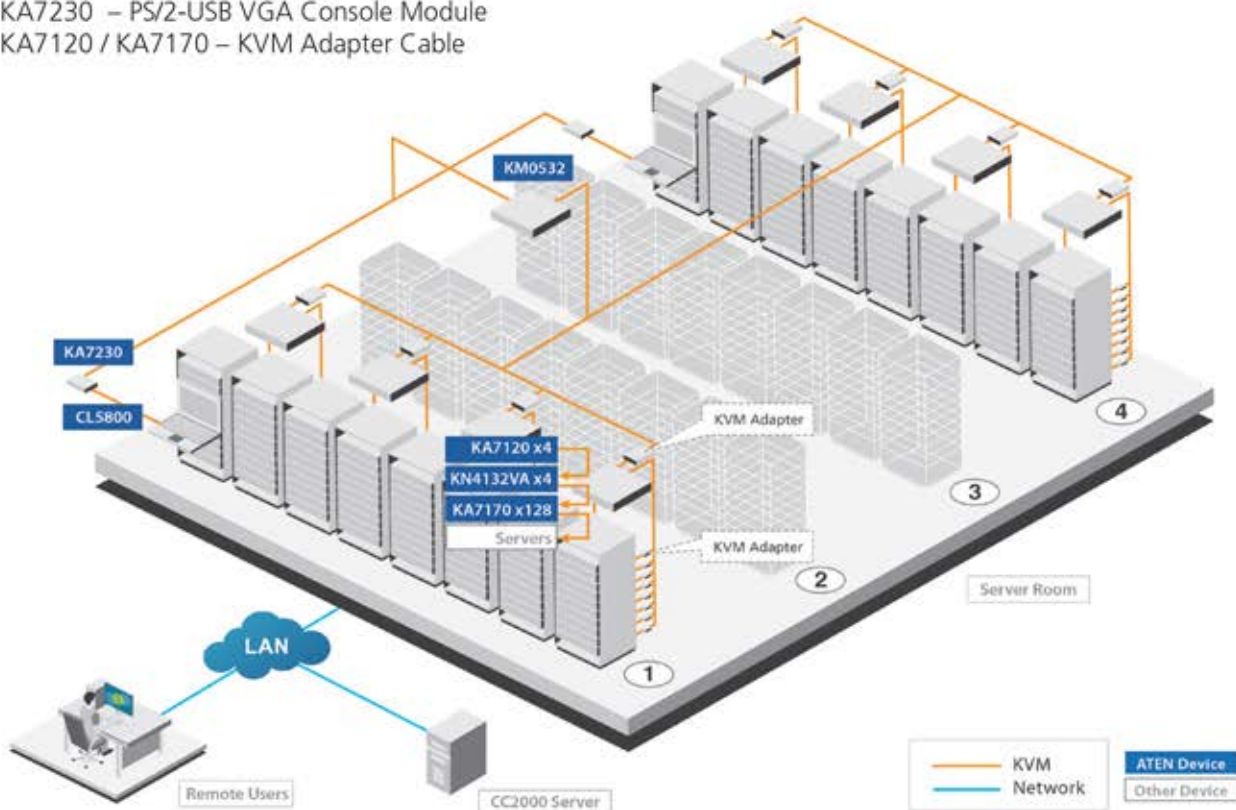
#### Challenges:

- Enable multiple operators to manage up to 300 servers.
- Provide access to multiple administrators in different locations to manage the many servers; locally and remotely, at the same time.
- Provide authentications and security for multiple users.

#### ATEN Solution

**The ATEN solution offered the police department's IT administrators direct effortless access to manage servers with remote desktop control of multiple servers simultaneously from a single login session while providing the means for efficient collaboration between departments to boost productivity. The ability to cascade KVM switches also provided flexible expansion options.**

KN4132VA – 32-Port Cat 5 KVM over IP Switch with Virtual Media  
 KM0532 – 32-Port Cat 5 Matrix KVM Switch with Daisy-Chain Port  
 CL5800 – PS/2-USB VGA Dual Rail LCD Console with USB Peripheral Support  
 CC2000 – Centralized Management Software  
 KA7230 – PS/2-USB VGA Console Module  
 KA7120 / KA7170 – KVM Adapter Cable





## Content Delivery / Networks

As numbers of smart phones, tablets and other mobile computing devices are growing exponentially, so are data and telecommunication service providers constantly evolving and having to upgrade their services to end users. Mobile devices and high-speed broadband connectivity are already embedded across vast sectors of our globalized society and they are driving momentum around trends such as Internet of Things (IoT), streaming entertainment and e-commerce. These developments in turn are driving higher demand for data center solutions that need to be equipped to deal with ever-increasingly vast amounts of data required for content delivery in our digital world.

### Telecoms Company New Server Room Build

A leading telecommunications company that provides various mobile services to hundreds of thousands of customers found that its server room space was insufficient for its growing data management needs, and so with an increasing number of servers performing increasingly complex content delivery tasks, a new build out became an absolute necessity. With almost 256 servers that are distributed in different server racks, and a limited number of dedicated IT administrators, the company needed an efficient solution to centralize management of all IT equipment in this new server room.

#### Challenges:

- Allow fewer administrators to manage hundreds of servers from multiple locations
- Offer remote BIOS-level access and power management capabilities for total control of all IT equipment
- Provide secure and centralized management through a single interface
- Allow for a high degree of platform and interface integration

#### ATEN Solution

**The ATEN solution offered remote access and secure, centralized management through a single interface that enabled the limited number of IT administrators to respond faster to critical server room emergencies while also providing space saving and energy efficiency benefits.**

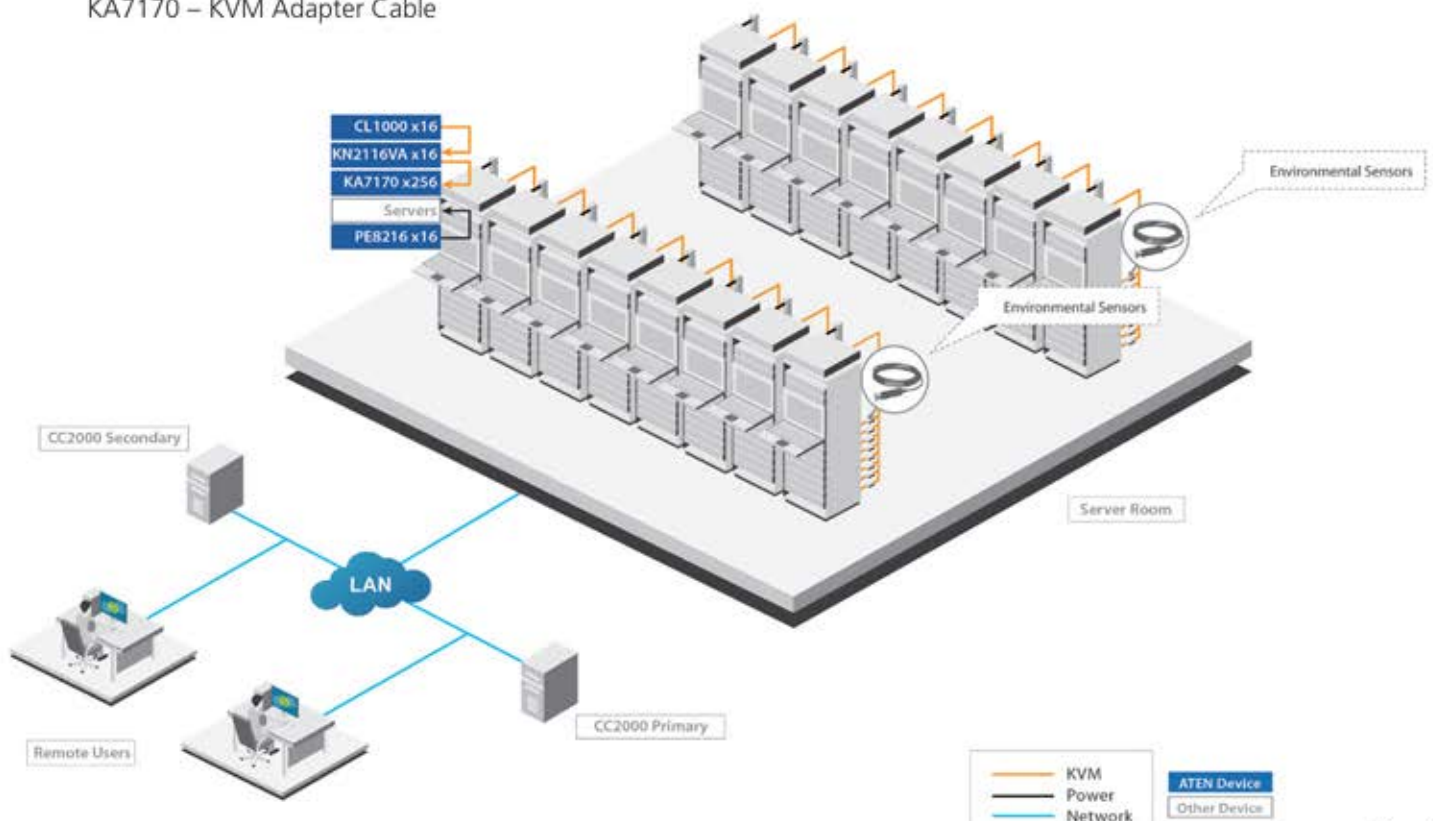
KN2116VA – 16-Port Cat 5 KVM over IP Switch with Virtual Media

PE8216 – 20A/16A 16-Outlet Outlet-Metered & Switched eco PDU

CL1000 – PS/2 VGA LCD Console

CC2000 – Centralized Management Software

KA7170 – KVM Adapter Cable



# Broadcasting

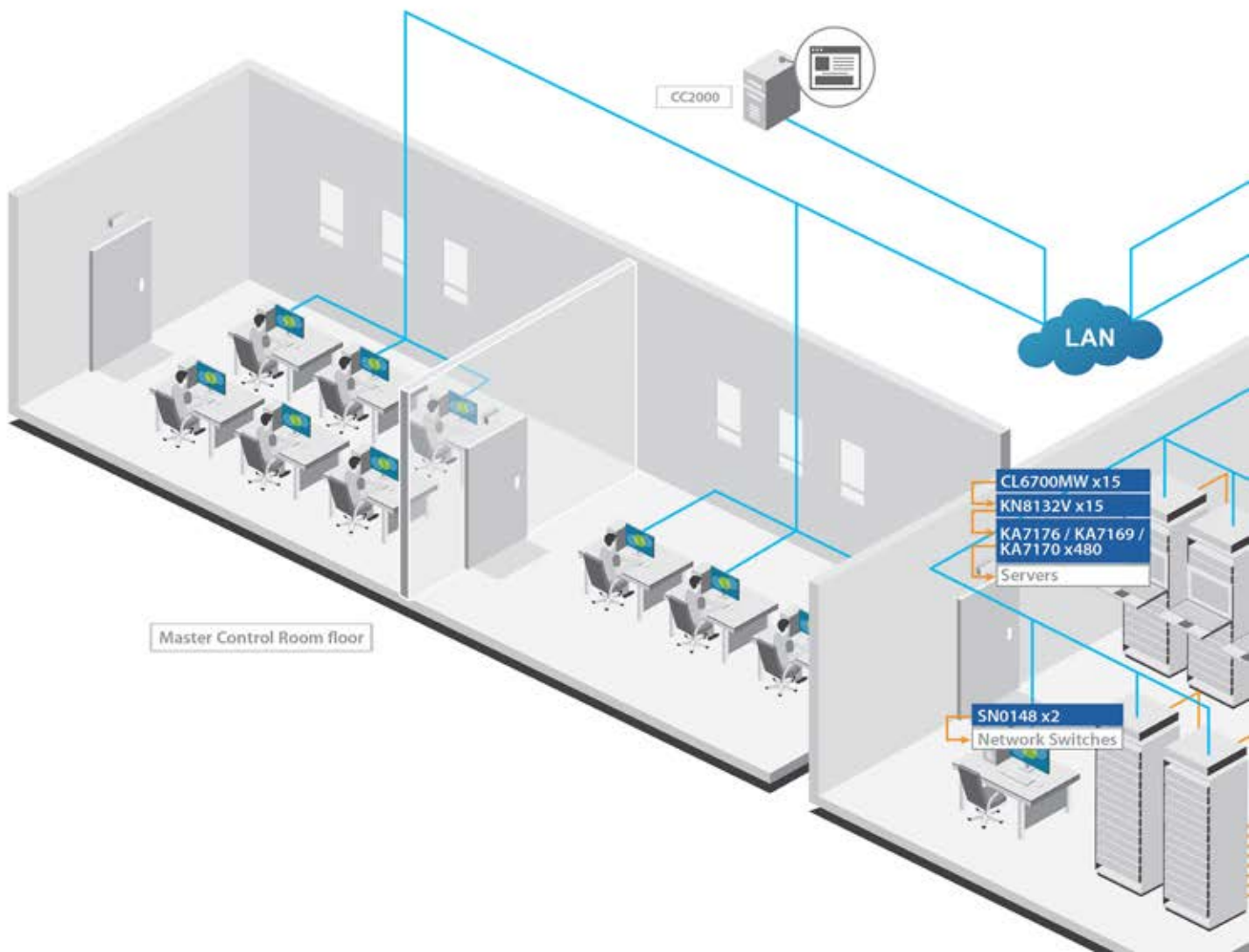
The broadcasting sector is a large one for server management generally and it is also one that drives demand for innovative KVM over IP solutions for control and monitoring applications and for the consolidation of information resources. The user experience of KVM over IP for server management is constantly improving, especially in terms of required video resolutions, and efficient control/management, so while KVM over IP switches have not been commonly used in broadcasting applications, as security, resolutions, and innovative features continue to rise, they are likely to become more popular. Broadcasting video servers handle content ingest, play-out, storage, archiving and transcoding, so just like any industry where companies must integrate and upgrade capacities to meet consumer demand, assurance and reliability are paramount to broadcasting server management solutions. The efficient and seamless provision of services to potentially millions of customers is simply a baseline requirement for business success.

## Remote Control and Monitoring Solution for TV Station Control Room

A multi-channel pay TV company was looking for a remote access and monitoring solution for its TV station control room and video server management. The company was looking to build better services with greater capacity, and so the master control room solution had to leverage the extensive existing network infrastructure to provide reliable remote centralized management with high-definition video and synced audio of hundreds of video servers that formed the core of their broadcasting capabilities. The solution also needed to be able to centrally manage the network switches used by the support team and to support a wide variety of video formats while also providing a comfortable viewing experience in the master control room.

### Challenges:

- Provide remote high definition video control/monitoring with synchronized audio to hundreds of servers and network switches
- Compatible with a variety of video server interfaces
- Centralized management with support for redundancy







## ATEN Solution

The ATEN Solution integrated seamlessly into the existing network infrastructure and provided a single portal, single sign-on, single IP address to securely access every device on the installation, including the video servers and the network switches, while also providing the FHD video and audio support required.

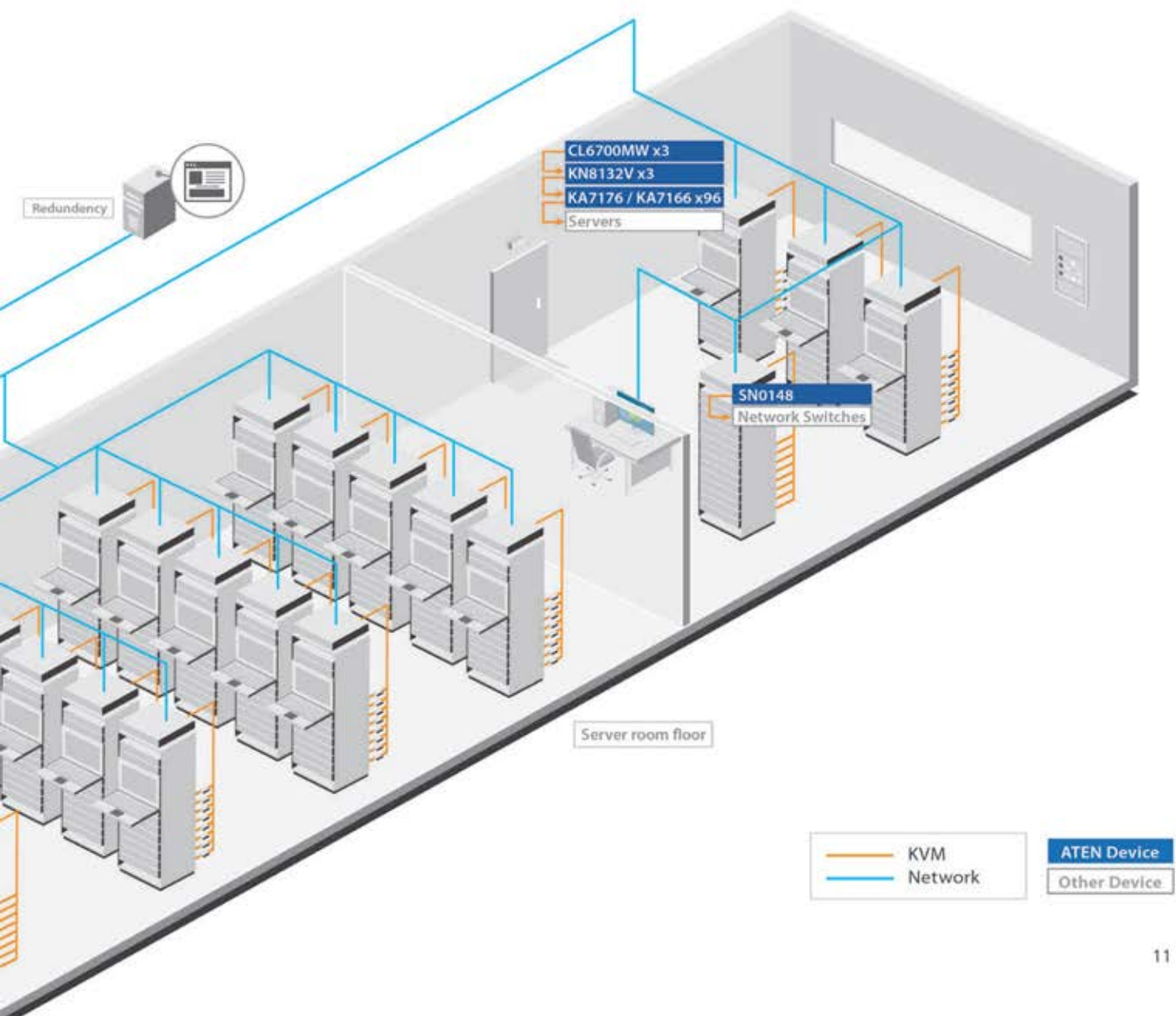
KN8132V – Cat 5 KVM over IP Switch with Virtual Media

CL6700 – USB DVI WideScreen Full HD LCD Console

SN0148 – Serial Console Server with Dual Power / LAN

CC2000 – Centralized Management Software

KA7176 / KA7166 / KA7170 / KA7169 – KVM Adapter Cable



# Transportation

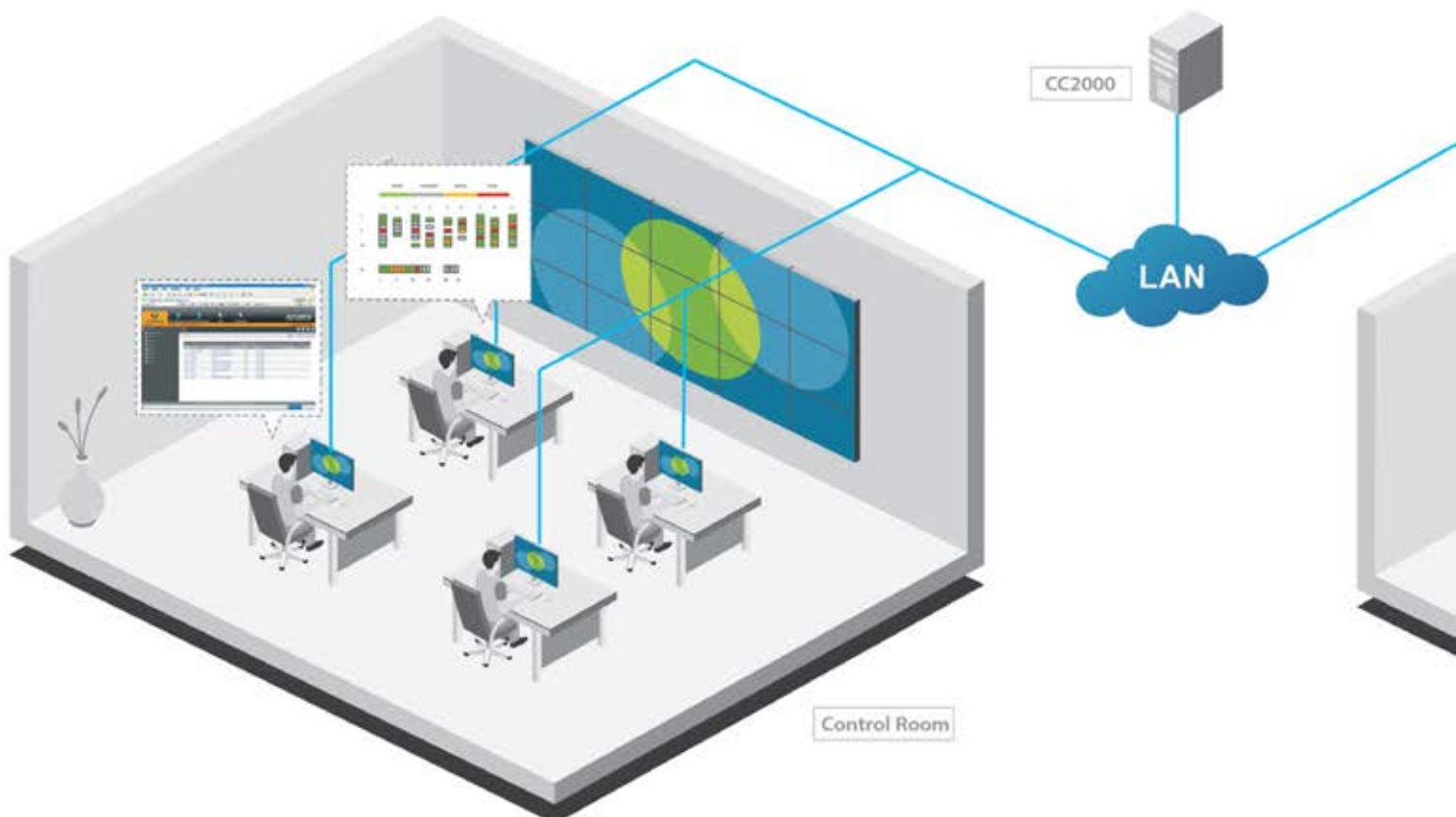
The transportation industry is predicted to be one of the fastest growing verticals, especially for high performance KVM switches and KVM over IP solutions, as network managers in this area need to be able to access and control multiple computer systems that are often geographically dispersed. Public transport systems face unique challenges in relation to passenger safety and security, as well as providing uninterrupted services, so there are a number of data access and management applications in this industry. With network managers usually based in centralized data centers at main transport hubs performing administrative tasks while overseeing the consolidation of servers at different locations throughout the transportation system, data management solutions in this vertical need to be especially stable and secure while offering efficient management and control.

## Subway System Remote Server Room Management

A subway company owns 2 rail lines; one line has 29 stations and the other 31 stations. Each station has its own server room and passenger information system. In order to centralize the control over all the servers in different locations, the subway company was seeking a solution that allows remote management and monitoring of the computers, as well as the ability to remotely control the power to each of the servers for optimum system maintenance and control.

Challenges:

- Provide centralized control of servers located in multiple locations
- Make it easy and efficient for IT administrators to remotely monitor the video output of multiple servers from one computer
- Remotely monitor and manage the power supplied to each server







### ATEN Solution

The ATEN solution can be accessed and managed via CC2000 management software, making it efficient and flexible for operators to control through a single portal at anytime from anywhere, while also permitting simultaneous monitoring of the video output from all servers in addition to providing the means for operators to easily monitor the real-time current, voltage, kWh, power consumption, and circuit breaker status of all connected equipment from a remote console. Virtual Media support also offers convenient, centralized real-time updating and maintenance.

KN2116VA – 16-Port Cat 5 KVM over IP Switch with Virtual Media

KN1108VA – 8-Port Cat 5 KVM over IP Switch (1920 x 1200)

PE8208G – 20A/16A 8-Outlet 1U Outlet-Metered & Switched eco PDU

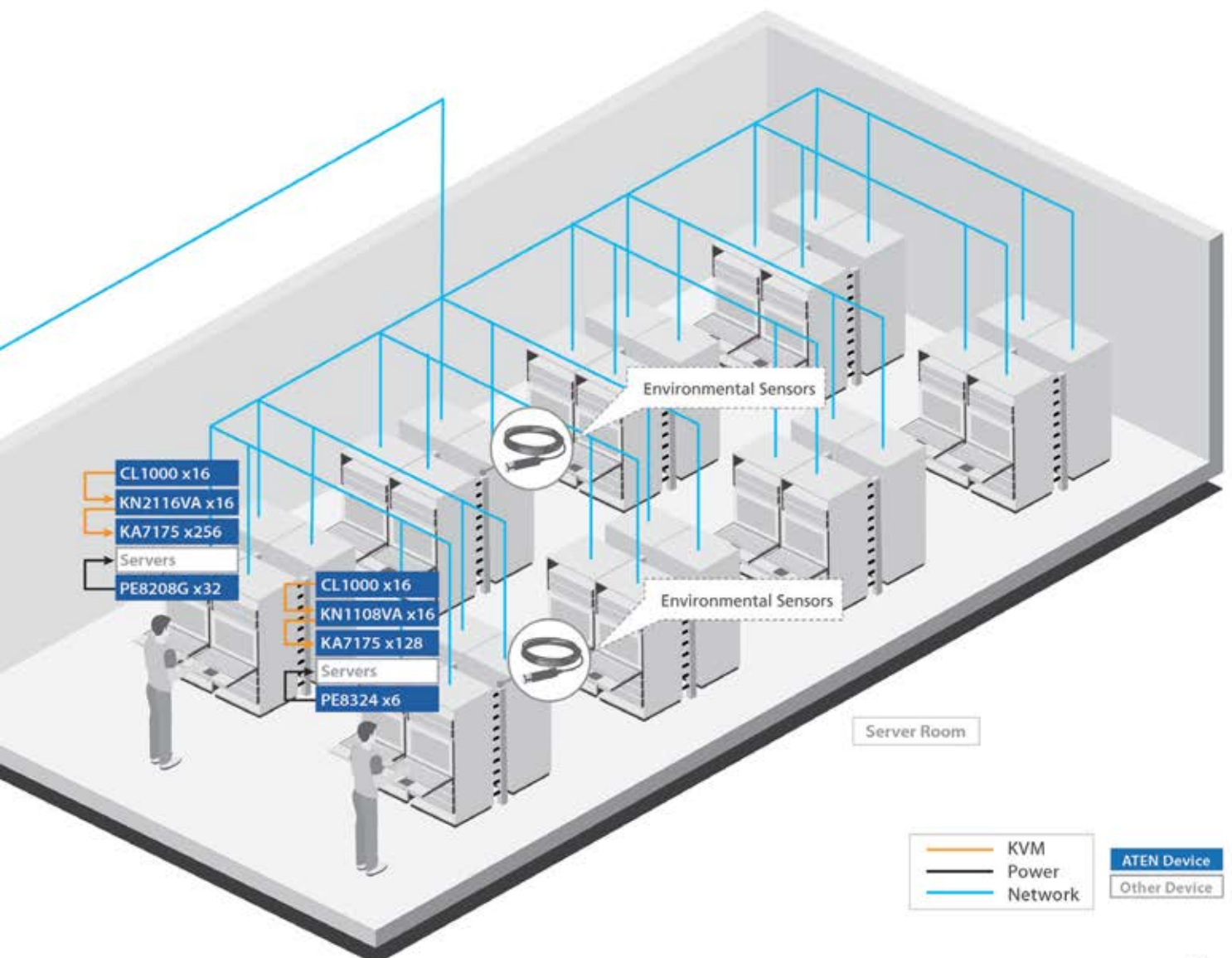
PE8324 – 24-Outlet Outlet-Metered & Switched eco PDU

CL1000 – PS/2 VGA LCD Console

CC2000 – Centralized Management Software

eco Sensors / eco DC – Energy & DCIM Management Software / Web GUI

KA7175 – KVM Adapter Cable



## Education

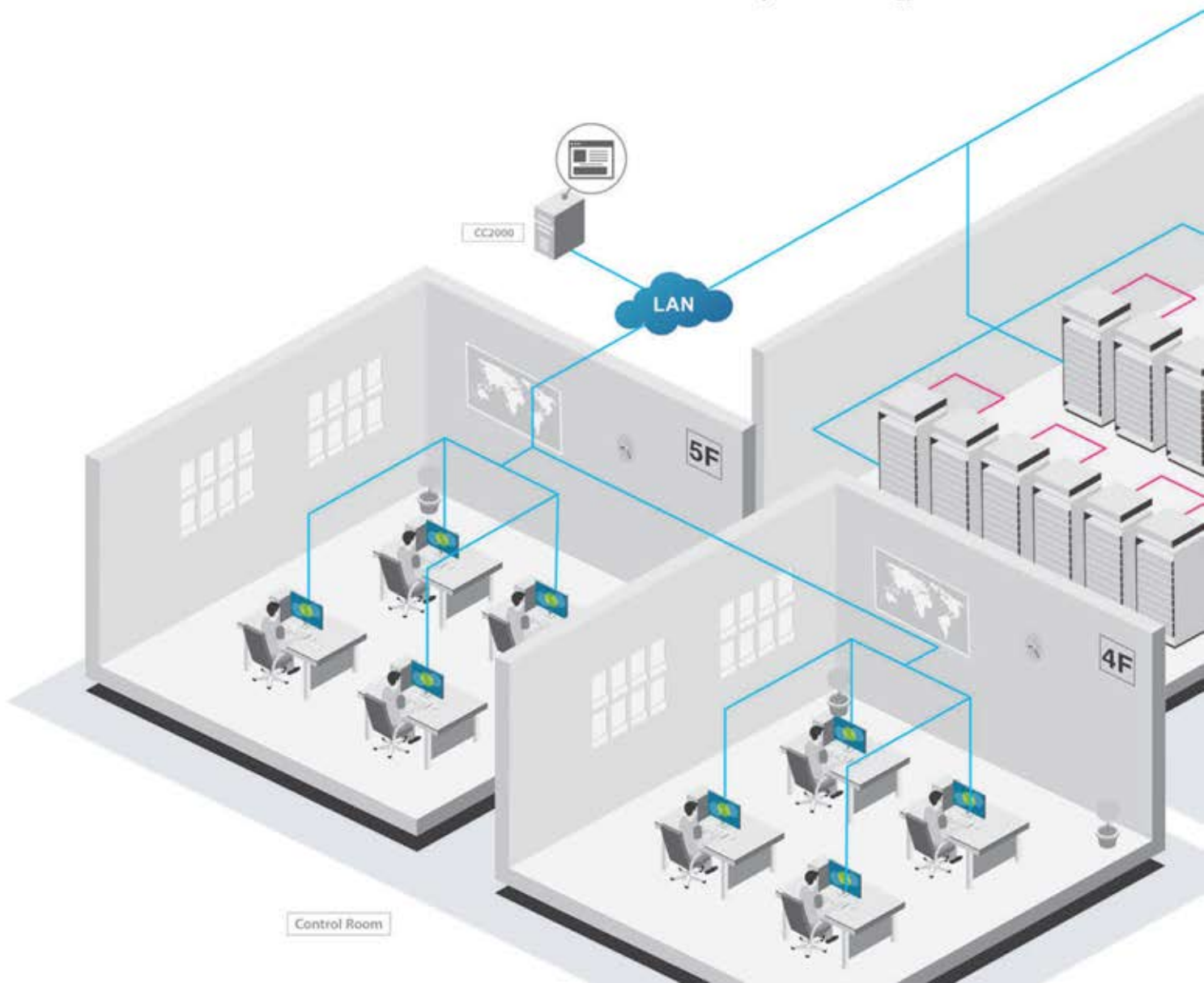
Keeping pace with the changing nature of educational technology is both a challenge and an opportunity. In line with collaborative solutions that are revolutionizing education in the classroom and lecture hall, an increasing movement towards digitizing not only educational records but also learning resources is driving new solutions for data center management across campuses. The education realm is one where KVM over IP solutions are especially useful when dealing with such distributed IT assets. Furthermore, often due to extra resources via state funding or private donations from philanthropists, universities are also leading the way when it comes to initiating green data center solutions, ones that provide real-time visibility into a data center's overall power capacity.

### University Campus High-density Green Server Room

A state-funded university was planning to establish a second campus and needed a new server room to store all the additional student administration details as well as host a huge amount of education and research information for the benefit of lecturers and students. A collocation room was also needed for other departments and students. The university hoped to build a large-scale, high-density green server room that offered effective central monitoring and energy conservation while upgrading their education and research facilities.

#### Challenges:

- Provide centralized control for every server to enable remote operation and problem solving
- Provide remote control on power outlet switches to enable quick restart of the servers in the event of abnormalities
- Reduce frequency of entry into the server and record operations performed by those staff on servers
- Monitor in real time the environmental data for the server room to effectively save on energy resources



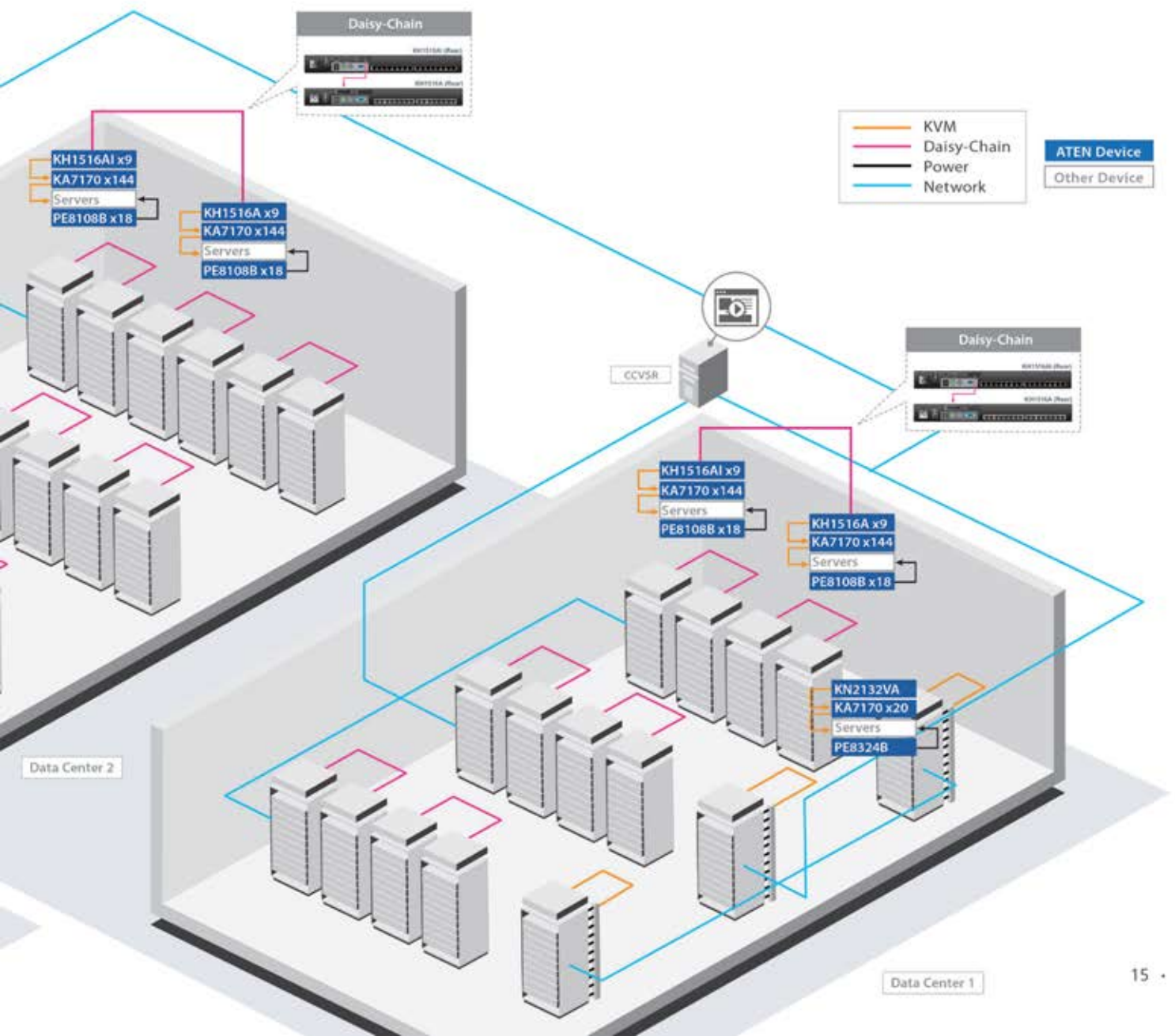




## ATEN Solution

The ATEN solution facilitated the construction of a centrally-controlled green server room that offered safety and energy conservation while assisting administration staff with remote monitoring and management of all IT equipment via centralized control, and achieving effective security by reducing the frequency of administrators entering the server room while recording all operations.

KN2132VA – 32-Port Cat 5 KVM over IP Switch with Virtual Media  
 KH1516AI – 16-Port Cat 5 KVM over IP Switch with Daisy-Chain Port  
 KH1516A – 16-Port Cat 5 KVM Switch with Daisy-Chain Port  
 PE8108B – 15A/10A 8-Outlet 1U Outlet-Metered & Switched eco PDU  
 PE8324B – 30A/32A 24-Outlet Outlet-Metered & Switched eco PDU  
 CC2000 – Centralized Management Software  
 CCVSR – Video Session Recording Software



## Serial Console Servers

- Serial Console Server with Single Power / LAN  
SN9108 / SN9116



- Serial Console Server with Dual Power / LAN  
SN0108A / SN0116A / SN0132 / SN0148



## eco PDUs

- Intelligent 1U Rack PDU  
PE8208 / PE8108



- Intelligent 0U Rack PDU  
PE8324 / PE8216



## Management Software

- Centralized Management Software  
CC2000



- Video Session Recording Software  
CCVSR



- Energy & DCIM Management Software  
eco Sensors



- Energy & DCIM Management Web GUI  
eco DC







## Corporate Headquarters

### ATEN International Co., Ltd.

3F., No.125, Sec. 2, Datung Rd., Sijhih District,  
New Taipei City 221, Taiwan  
Phone: +886-2-8692-6789 Fax: +886-2-8692-6767  
<http://www.aten.com/global/en/>  
E-mail: [marketing@aten.com](mailto:marketing@aten.com)

## America Region:

### ATEN Technology Inc.

15365 Barranca Parkway, Irvine, CA 92618, U.S.A  
Phone: +1-949-428-1111 Fax: +1-949-428-1100  
<http://www.aten.com/us/en/>  
E-mail: [sales@aten-usa.com](mailto:sales@aten-usa.com)

### ATEN New Jersey Inc.

220 Davidson Avenue, Suite 404, Somerset,  
NJ 08873, U.S.A  
Phone: +1-732-356-1703 Fax: +1-732-356-1639  
<http://www.aten.com/us/en/>  
E-mail: [sales@aten-usa.com](mailto:sales@aten-usa.com)

## EMEA Region:

### ATEN Infotech N.V.

Mijnwerkerslaan 34, 3550 Heusden-Zolder, Belgium  
Phone: +32-11-531543 Fax: +32-11-531544  
<http://www.aten.com/eu/en/> E-mail: [sales@aten.be](mailto:sales@aten.be)

### ATEN U.K. Limited

466 Malton Avenue, Slough SL1 4QU, U.K.  
Phone: +44-1753-539-121 Fax: +44-1753-215-253  
<http://www.aten.com/gb/en/> E-mail: [sales@aten.co.uk](mailto:sales@aten.co.uk)

### ATEN Poland Sp. z o. o.

ul. Daimlera 2, 02-460 Warszawa, Poland  
Phone: +48-669-062-112  
<http://www.aten.com/pl/pl/>  
E-mail: [poland@aten.com](mailto:poland@aten.com)

### ATEN Russia

Office 14212, No.14 Sereblyakova proezd,  
Moscow, Russia.  
Phone: +7-495-134-2808  
<http://www.aten.com/ru/ru/> E-mail: [russia@aten.com](mailto:russia@aten.com)

### ATEN Info Iletisim Ltd.

Beştepe Mah.Yaşam Cad. 13-A / 76  
Yenimahalle Ankara, Turkey  
Phone: +90-312-284-00-27 E-mail: [turkey@aten.com](mailto:turkey@aten.com)

## Oceania Region:

### ATEN ANZ Pty Ltd.

Suite 3, 19, 32 Delhi Road, North Ryde,  
NSW 2113, Australia  
Phone: +61-2-9114-9933 Fax: +61-2-8072-3723  
<http://www.aten.com> E-mail: [sales@au.aten.com](mailto:sales@au.aten.com)

## Asia Pacific Region:

### ATEN China Co., Ltd.

18/F, Tower A, Horizon International Tower, No.6,  
Zhichun Road, Haidian District, Beijing, China 100088  
Phone: +86-10-5255-0110 Fax: +86-10-8296-1318  
<http://www.aten.com/cn/zh/> E-mail: [sales@aten.com.cn](mailto:sales@aten.com.cn)

### ATEN Japan Co., Ltd.

Tokyo Headquarters  
ATEN Bldg. 8-4, Minami-senju 3-chome, Arakawa-ku,  
Tokyo 116-0003, Japan  
Phone: +81-3-5615-5810 Fax: +81-3-3891-3810  
<http://www.aten.com/jp/ja/> E-mail: [info@atenjapan.jp](mailto:info@atenjapan.jp)

### Osaka Branch

Awajimachi Dai-Building 3F  
3-1-9, Awajimachi, Chuo-ku, Osaka-shi, 541-0047, Japan  
Phone: +81-6-6229-5810 Fax: +81-6-6229-8810  
<http://www.aten.com/jp/ja/> E-mail: [info@atenjapan.jp](mailto:info@atenjapan.jp)

### ATEN Korea Co., Ltd.

B-303, Gabeul Great Valley, 60-5, Gasan-dong,  
Geumcheon-gu, Seoul, Korea, 153-801  
Phone: +82-2-467-6789 Fax: +82-2-467-9876  
<http://www.aten.com/kr/ko/> E-mail: [sales@aten.co.kr](mailto:sales@aten.co.kr)

### Atech Peripherals, Inc.

6F., No.133, Sec. 2, Datung Rd., Sijhih District,  
New Taipei City 221, Taiwan  
Phone: +886-2-8692-6969 Fax: +886-2-8692-6926  
<http://www.aten.com/tw/zh/> E-mail: [taiwan@aten.com](mailto:taiwan@aten.com)

### ATEN India Rep. Office

Unit 406, 4th Floor, Barton Center, M.G. Road,  
Bangalore - 560001, India  
Phone 1: +91-80-48517231 Phone 2: +91-9686151525  
E-mail: [South-Asia@aten.com](mailto:South-Asia@aten.com)

## About ATEN

ATEN International Co., Ltd., established in 1979, is the leading provider of IT connectivity and management solutions. Offering integrated KVM, Professional Audiovisual, and Intelligent Power solutions, ATEN products connect, manage, and optimize electronics in corporate, government, industrial, educational, and retail environments. ATEN has 500+ issued international patents and a global R&D team that produces a constant stream of innovative solutions, resulting in a comprehensive portfolio of products available worldwide.

